

Installation Notes for 992G Loader With a Cat 3508 Engine

01-50009

DOC 19-00056

(Note) Even though a banjo fitting has been provided, some engines have been known to have different size drain plugs, requiring a different size banjo fitting. If the banjo fitting provided does not match to the specific drain plug size contact your local puraDYN dealer or puraDYN directly (866- puraDYN) for a different size banjo fitting.

The following document is used in conjunction with the puraDYN® Bypass Oil Filtration System Installation Manual (TF 240) that is included in the unit box, and as such, should be considered a supplemental source of information. Further, this document covers the installation of a TF 240 Bypass Oil Filtration unit on a **Rinker 992G Loader with CAT Engine**

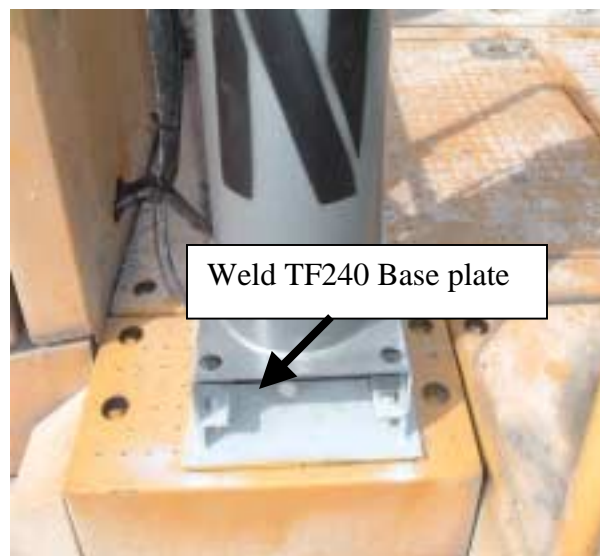


Mounting the Unit: The TF 240 Bypass Oil Filtration unit should be mounted to the walking platform (Catwalk) (**PICTURE 1**). Weld the support base bracket to the platform. Mount the unit to the support bracket. Attach with the supplied hardware. (See **PICTURES 1 & 2**)



Mount Unit
to Platform

PICTURE 1



Weld TF240 Base plate

PICTURE 2

Installation Notes for 992G Loader With a Cat 3508 Engine

01-50009

DOC 19-00056

Installing the pressure fittings: Drill a 3/4" hole in the engine box's cover to run hose (**PICTURE 5**). Remove the Oil port fitting on the filter housing and install the 7/16"-20 O-ring x 1/8" F.P. bushing and the 90° shut-off valve (supplied) Route 3/16" high-pressure hose to the 90° shut off valve on the engine. And to the metering jet on the bottom of the TF240 puraDYN® Unit. (See **PICTURES 3 & 4**)



Install Valve at Oil Port

PICTURE 3



7/16 Boss O-ring

PICTURE 4

Installing the Banjo Fitting: Drill a 1 1/2" hole in the engine box's cover to run hose (**PICTURE 5**). Remove the oil drain plug on the side of the oil pan. Install the fitting to the drain pan (**PICTURE 8**). The TF240 By-Pass Oil Filtration unit oil return hose routing should not come in contact with any moving parts or sharp edges. After draining the engine oil and cleaning all surfaces, install the return fitting into the oil pan drain port. Note: Properly orient the fitting in order to avoid damage from road debris. Connect the oil return hose and secure in place. Note: If necessary, cover the oil return hose with a secondary hose (or equivalent) to better protect it from getting damaged.



Drill Clearance Holes for Lines & install grommets.

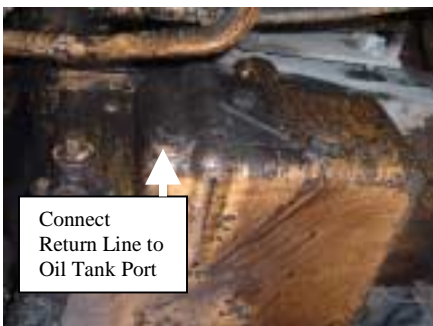
PICTURE 5



PICTURE 6



PICTURE 7



Connect Return Line to Oil Tank Port

PICTURE 8



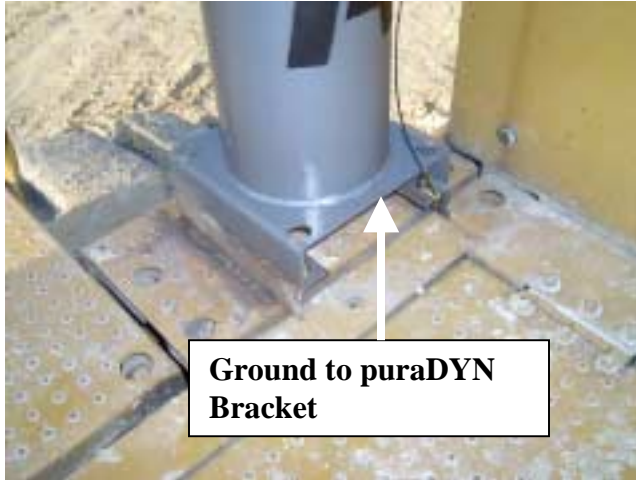
PICTURE 9

Installation Notes for 992G Loader With a Cat 3508 Engine

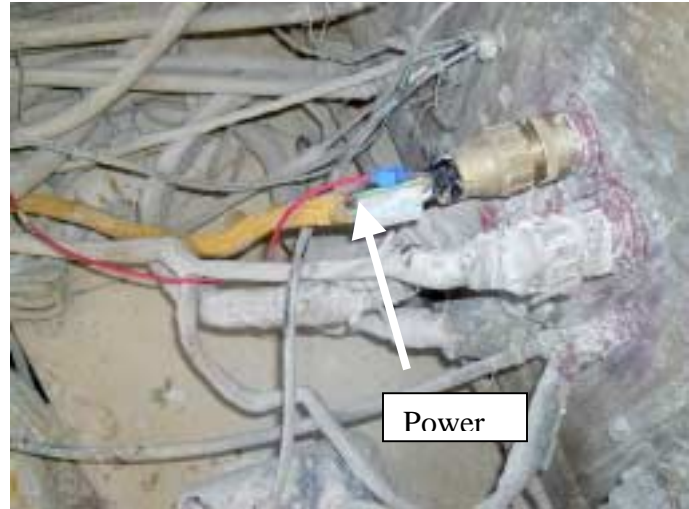
01-50009

DOC 19-00056

Installing the puraDYN® Heater: Route one electrical wire to the puraDYN® base bracket for your ground. (See **PICTURE 10**) run the other puraDYN® wire to ignition power using supplied electrical hardware and in-line fuse. (See **PICTURE 11**) Also, ensure that both hose and wire routing does not come in contact with moving parts, sharp edges or hot exhaust manifolds.



PICTURE 10



PICTURE 11

Tie off all lines with tie wraps. Fill engine with oil. Start engine and check all connections for oil leaks. Open metering jet sample valve and verify that oil flow is present. After five minutes of engine operation, touch the bottom center of the PFT Bypass Oil Filtration unit and verify that it is warm to the touch. Shut engine off and check oil level. Place puraDYN® Installation Manual (PFT8 through PFT60) in the documentation holder mounted to the equipment