

Installation Notes for Gorman-Rupp 12" Trash Pump

01-30019

With a John Deere 6068TF

DOC 19-00053

(Note) Even though a banjo fitting has been provided, some engines have been known to have different size drain plugs, requiring a different size banjo fitting. If the banjo fitting provided does not match to the specific drain plug size contact your local puraDYN dealer or puraDYN directly (866- puraDYN) for a different size banjo fitting.

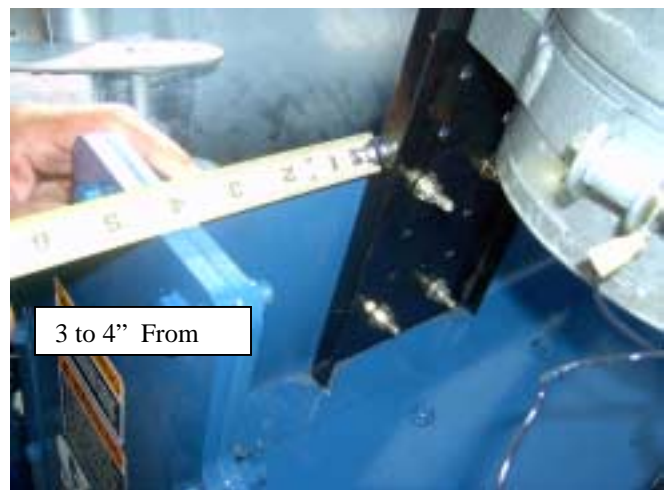
The following document is used in conjunction with the puraDYN® Bypass Oil Filtration System Installation Manual (PFT8 through PFT60) that is included in the unit box, and as such, should be considered a supplemental source of information. Further, this document covers the installation of a PFT24 Bypass Oil Filtration unit on a **Gorman-Rupp 12" Trash pump W/John Deere 6068TF Engine**



Mounting the Unit: The PFT24 Bypass Oil Filtration unit should be mounted to the Support frame rail above the drive belt using the one 20" bracket and two clamps supplied. You will need to drill four 1/4" holes in the Lifting frame rail 3-4" across from the edge of the frame using the supplied bracket as a template. Mount the puraDYN bracket to the holes in the Lifting frame. Attach with the supplied hardware. (See **PICTURES 1 & 2**)



PICTURE 1



PICTURE 2

Installation Notes for Gorman-Rupp 12" Trash Pump With a John Deere 6068TF

01-30019

DOC 19-00053

Installing the pressure fittings: Remove the 1/8" Oil pressure switch and install the 1/8" street tee into the block and install the 90° shut-off valve supplied. Reinstall the oil pressure switch. Route high-pressure hose to the 90° valve on the engine. Connect hose to 90° shut-off valve and **puraDYN®** Filter Unit. (See **PICTURES 3 & 4**)

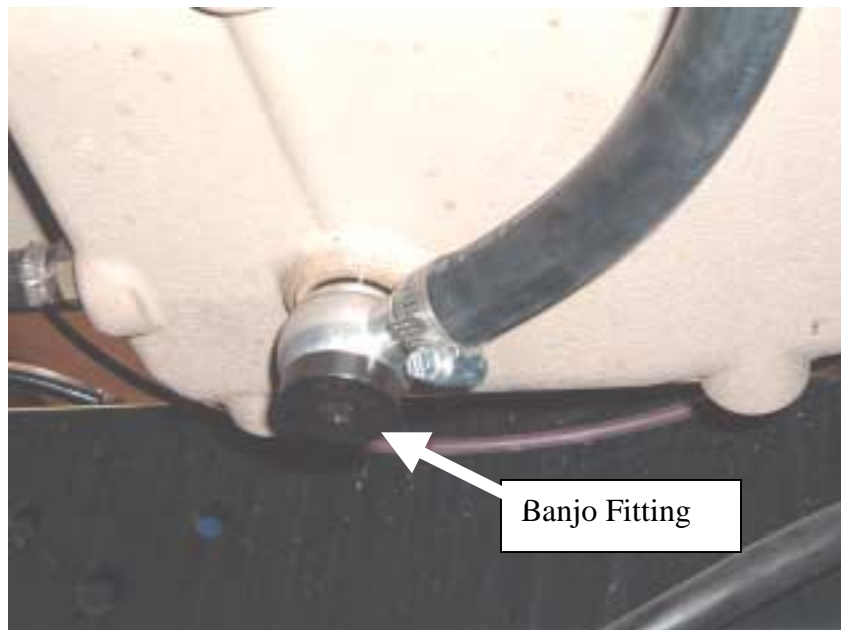


PICTURE 3



PICTURE 4

Installing the Banjo Fitting: Remove the oil drain plug on the bottom of the oil pan. Install the 18mm banjo fitting to the drain pan. (See **PICTURE 5**) The PFT24 Bypass Oil Filtration unit oil return hose routing should not come in contact with any moving parts or sharp edges. After draining the engine oil and cleaning all surfaces, install the return fitting into the oil pan drain port. Note: Properly orient the fitting in order to avoid damage from road debris. Connect the oil return hose and secure in place with radiator clamps. Note: If necessary, cover the oil return hose with a secondary hose (or equivalent) to better protect it from getting damaged.



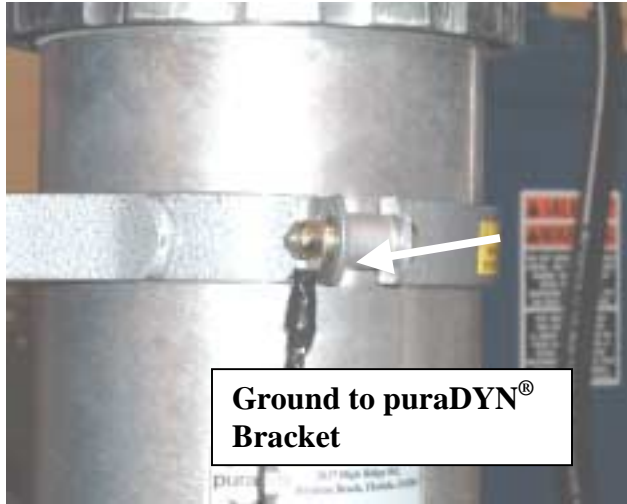
PICTURE 5

Installation Notes for Gorman-Rupp 12" Trash Pump With a John Deere 6068TF

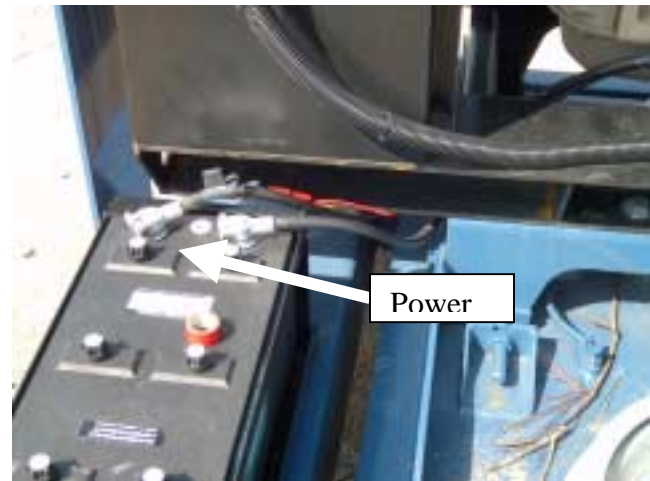
01-30019

DOC 19-00053

Installing the puraDYN® Heater: Route one electrical wire to the **puraDYN®** bracket for your ground. (See **PICTURE 6**) run the other **puraDYN®** wire to one of the terminals on the pressure switch and install using the spade connector (See **PICTURE 8**) run a wire from the other terminal on the pressure switch to the power side of the battery using supplied electrical hardware and in-line fuse. (See **PICTURES 7 & 8**) Also, ensure that both hose and wire routing does not come in contact with moving parts, sharp edges or hot exhaust manifolds. (See **PICTURE 9**)



PICTURE 6



PICTURE 7



PICTURE 8



PICTURE 9

Tie off all lines with tie wraps. Fill engine with oil. Start engine and check all connections for oil leaks. Open metering jet sample valve and verify that oil flow is present. After five minutes of engine operation, touch the bottom center of the PFT Bypass Oil Filtration unit and verify that it is warm to the touch. Shut engine off and check oil level. Place **puraDYN®** Installation Manual (PFT8 through PFT60) in the documentation holder mounted to the equipment