

Installation Notes for John Deere Skid Steer Models 250 & 260 with 3029 Engines

The following document is used in conjunction with the **puraDYN**[®] Bypass Oil Filtration System Installation Manual (PFT8 through PFT60) that is included in the unit box and, as such, should be considered a supplemental source of information. Further, this document covers the installation of a PFT8 Bypass Oil Filtration unit on John Deere Skid Steer Models 250 & 260 with 3029 engine, owned by United Rentals Corporation (see **PICTURE 1**).



PICTURE 1

The PFT8 Bypass Oil Filtration unit is mounted on top of the muffler bracket by attaching **puraDYN**[®] bracket 12-00113 using the two existing muffler mounting bracket bolts (see **PICTURES 2, 3 & 4**).



PICTURE 2



PICTURE 3



PICTURE 4

Attach PFT8 Bypass Oil Filtration unit to the **puraDYN**[®] bracket with supplied “W” and “C” clamps, spacers, 1/4-20 x 1” long hex bolts, flat washers and nuts as shown in **PICTURE 6** (Model 250 configuration) or **Picture 7** (Model 260 configuration).



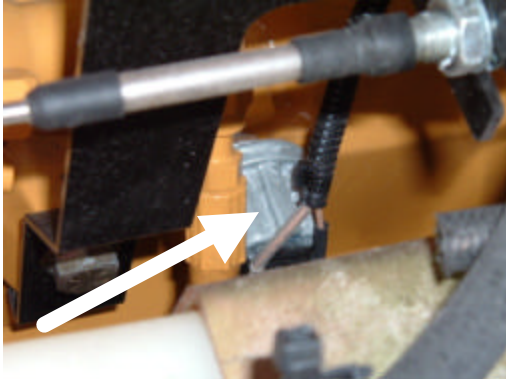
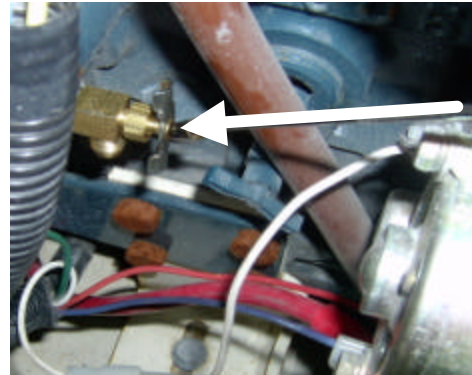
PICTURE 6



PICTURE 7

Installation Notes for John Deere Skid Steer Models 250 & 260 with 3029 Engines

Remove oil pressure sending unit from engine block, install supplied brass "T" fitting and shut-off valve into engine block and install oil pressure sending unit back into brass "T" fitting as shown in **PICTURES 8 & 9**.

**PICTURE 8****PICTURE 9**

Connect pressure supply line from the shut-off valve on the engine (**PICTURE 9**) to the PFT8 Bypass Oil Filtration unit as shown in **PICTURES 10 & 11**. Caution! Hose routing should not come in contact with any moving parts, sharp edges or hot exhaust manifold.

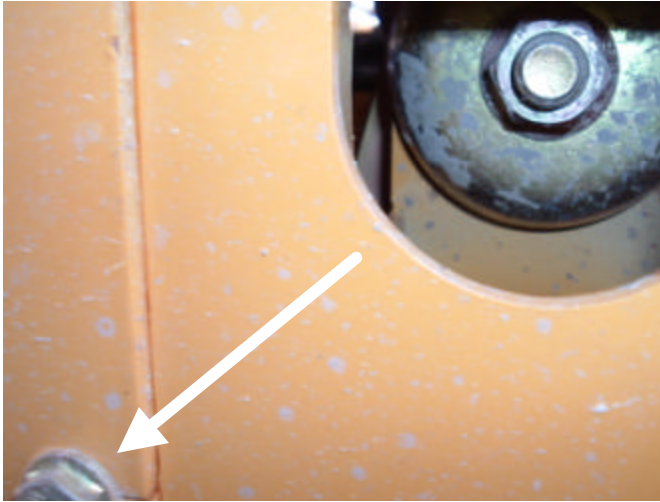
**PICTURE 10****PICTURE 11**

Route supplied vent hose down and between the lower "W" clamp, connect to vent valve assembly, cut to length and tie-wrap in place as shown in **PICTURE 12**.

**PICTURE 12**

Installation Notes for John Deere Skid Steer Models 250 & 260 with 3029 Engines

Remove the belly pan as shown in **PICTURE 13**. After draining the engine oil and cleaning all surfaces, install supplied banjo bolt, banjo fitting and banjo spacer into the oil pan drain port. Note: Properly adjust the banjo fitting in order to avoid damage from road debris. Route and connect the oil return hose from the PFT8 Bypass Oil Filtration unit to the banjo fitting and secure with radiator clamps as shown in **PICTURES 14**. Reinstall the belly pan. Cover oil return hose with secondary hose (or equivalent) to protect it from getting damaged, as required. Caution! Hose routing should not come in contact with any moving parts, sharp edges or hot exhaust manifold.

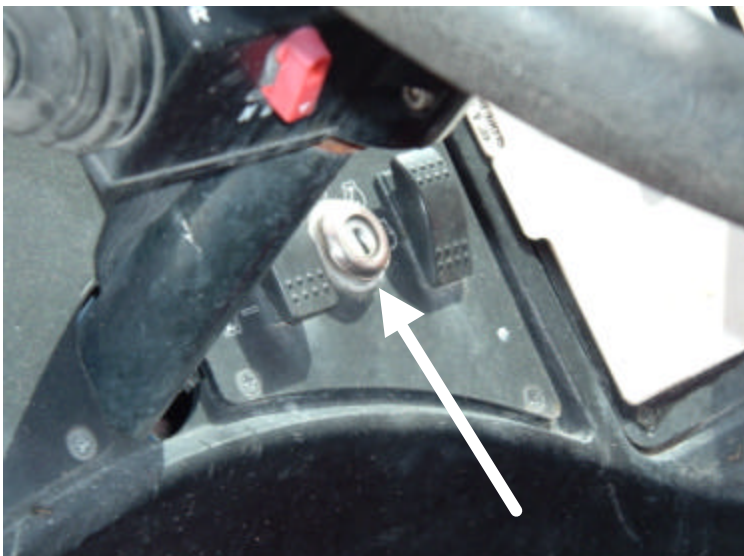


PICTURE 13

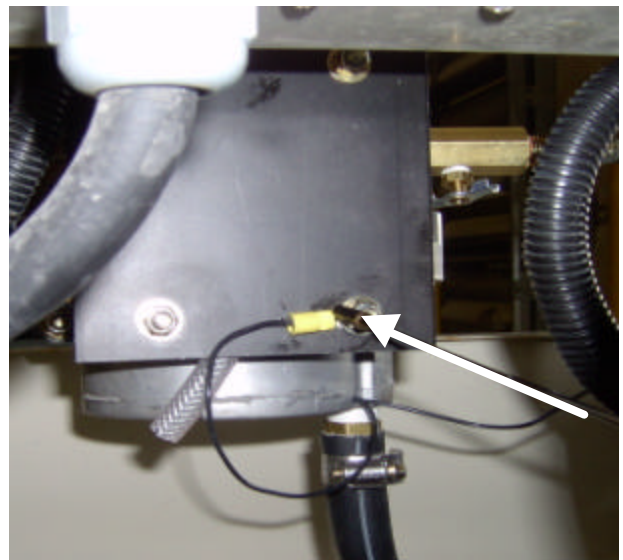


PICTURE 14

Route and connect one electrical wire to key ignition using supplied electrical hardware and in-line fuse holder as shown in **PICTURE 15**. Route and connect one wire (using supplied electrical hardware) to ground bolt as shown in **PICTURE 16**. Caution! Wire routing should not come in contact with any moving parts, sharp edges or hot exhaust manifold.



PICTURE 15



PICTURE 16

Fill engine with oil. Start engine and check all connections for oil leaks. Open metering jet sample valve and verify that oil flow is present. After five minutes of engine operation, touch the bottom center of the PFT Bypass Oil Filtration unit and verify that it is warm to the touch. Shut engine off and check oil level. Place the **puraDYN** Installation Manual (PFT8 through PFT60) in equipment documentation holder.