

The following document is used in conjunction with the **puraDYN** Bypass Oil Filtration System Installation Manual (PFT8 through PFT60) that is included in the unit box, and as such, should be considered a supplemental source of information. Further, this document covers the installation of a PFT8 Bypass Oil Filtration unit on a Sullair 185 compressor with John Deere 4045D diesel engine, owned by United Rentals Corporation (see **PICTURE 1**).



PICTURE 1

The PFT8 Bypass Oil Filtration unit is mounted to the inside of the trailer housing top panel by way of an “L” mounting plate. Locate centerline of supplied “L” mounting plate on inner surface of the top panel approximately 5-1/2” from the left side of the trailer housing and just inward from the front panel. Mark, center punch and drill two 13/32” diameter holes through top panel. Loosely attach “W” clamps to “L” bracket with supplied 1/4-20 x 1” long hex bolts, flat washers and nuts. Attach “L” mounting plate to trailer housing top panel with supplied 3/8-16 x 1” long hex bolts, flat washers and nuts as shown in **PICTURES 2 & 3**.



PICTURE 2



PICTURE 3

Orient and attach PFT8 Bypass Oil Filtration unit with supplied “C” clamps, spacers, 1/4-20 x 1” long hex bolts, flat washers and nuts as shown in **PICTURE 4**. Remove oil pressure sending unit from engine block, install supplied brass “T” fitting and shut-off valve into engine block and install oil pressure sending unit into brass “T” fitting as shown in **PICTURE 5**.

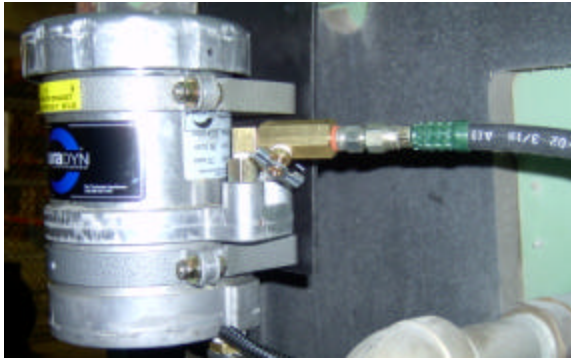


PICTURE 4



PICTURE 5

Route supplied vent hose downward and between the lower "W" clamp, connect to vent valve assembly, cut to length and tie-wrap in place. Install supplied street elbow and metering jet assembly as shown in **PICTURE 6**. Connect pressure supply line from the shut-off valve to the PFT8 Bypass Oil Filtration unit as shown in **PICTURES 6 & 7**. Caution! Hose routing should not come in contact with any moving parts, sharp edges or hot exhaust manifold.

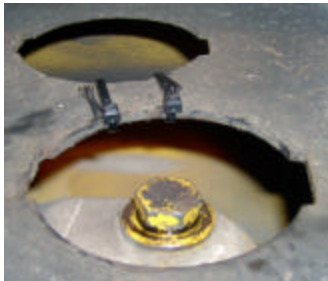


PICTURE 6



PICTURE 7

Cut a 1-1/2" wide slot between existing belly pan holes as shown in **PICTURE 8**. Install one end of the 3/4" I.D. return hose onto the PFT8 Bypass Oil Filtration unit hose barb and the other end onto the banjo fitting, securing each with radiator clamps (see **PICTURE 9**). Route the banjo fitting under the engine and towards the drain plug. Drain engine oil and clean sealing surface then install banjo bolt and banjo fitting into the oil pan drain port as shown in **PICTURE 10**. Caution! Hose routing should not come in contact with any moving parts, sharp edges or hot exhaust manifold.



PICTURE 8



PICTURE 9



PICTURE 10

Connect one electrical wire to ignition switch "on" terminal using supplied hardware and in-line fuse holder, then connect second wire to "W" clamp bolt (ground) as shown in **PICTURES 11 & 12**. Caution! Wire routing should not come in contact with any moving parts, sharp edges or hot exhaust manifold.



PICTURE 11



PICTURE 12

Fill engine with oil. Start engine and check all connections for oil leaks. Open metering jet sample valve and verify that oil flow is present. After five minutes of engine operation, touch the bottom center of the PFT Bypass Oil Filtration unit and verify that it is warm to the touch. Shut engine off and check oil level. Place puraDYN Installation Manual (PFT8 through PFT60) in the documentation holder mounted to the outside rear panel.